

# PRODUCT DATA SHEET

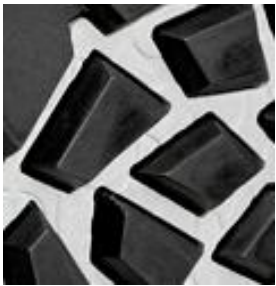


## BORNEO MT MID S3 WR M AN CI HI HRO SRC

Art. No. 63.087.0



- Protection:** fiberglass toe cap and steel midsole  
**Plus:** flexible metatarsal instep protection with Microban<sup>®</sup> protection, TPU wrist protection with high-rebound foam, collar and tongue made of suede
- Upper:** smooth leather
- Lining:** Sympatex Membrane
- Footbed:** evercushion<sup>®</sup> BA+
- Sole:** PU/rubber sole SCUFF CAPS EVO - 300°C heat resistant, slip-resistant on unsurfaced grounds, mud-releasing
- Colour:** black
- Sizes:** 40 - 48



### RUBBER OUTSOLE SCUFF CAPS EVO

It is obvious that the heavy duty pattern of this hard-wearing, up to 300°C heat resistant HRO rubber outsole has been designed for optimum safety and performance, especially on unsecured grounds.



### METATARSAL PROTECTION

Special protection for the metatarsal area. The particularly light and flexible protection absorbs 90% of the impact energy and is equipped with antimicrobial protection.



### TPU ANKLE PROTECTION

The 2-layer protection system made of TPU and HIGH REBOUND FOAM protects ankles and joints. The TPU element of the protection increases lateral support and the 8 mm thick layer of rebound foam absorbs shocks perfectly.



### SYMPATEX<sup>®</sup>

The Sympatex<sup>®</sup> membrane makes the shoe wind- and waterproof and ensures an excellent moisture management.